

eco 820

Automotive Equipment

(EN) Wheel
Aligner

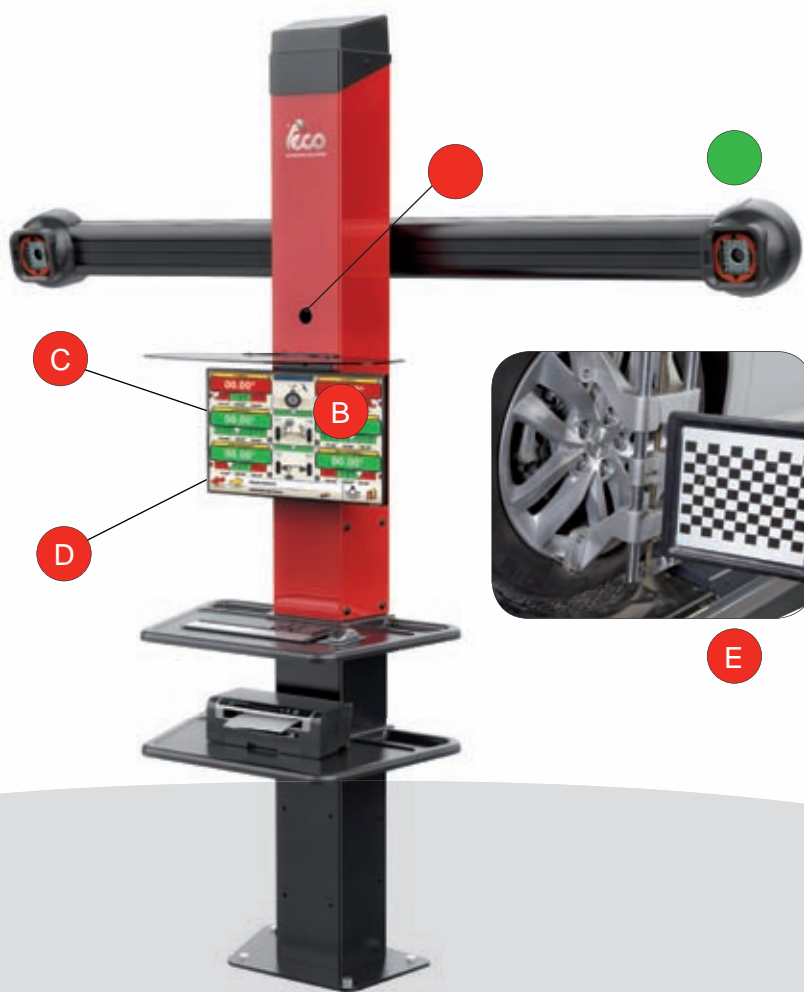


Key Benefits

Value – Ease of use – Design



EN Electronic wheel aligner based on Windows software platform, suitable to perform wheel alignment adjustments for cars and light commercial vehicles and supplied complete with mini-PC installed inside the column. TECO 820 is equipped with **2 high-resolution digital camera reading system**, 4 «anti-shock» visual targets, 4 clamps having capacity from 11" to 27", column with shelves for keyboard and printer, primary data bank composed of more than 20.000 vehicles and professional alignment software. The upper bar is fixed and can be installed at 8 different working heights from 2,6 m to 1.0 m. Available on demand a version with shorter column for low-ceiling installations.



PC & OPERATING SYSTEM FEATURES

PC & OPERATING SYSTEM

- CPU INTEL CELERON, I3, I5, I7
- HDD or SSD 32 Gb
- RAM 4 Gb
- WIN 10 Pro 32 bit or 64 bit
- Min 6 USB ports 2.0
- Operating system languages :
EN - FR - ES - P - IT - DE - RUS - TR - RC *

Printer

- Ask manufacturer for homologated printer listing

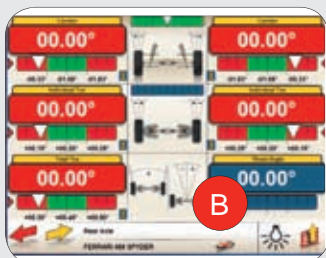
* All other languages downloadable via Internet



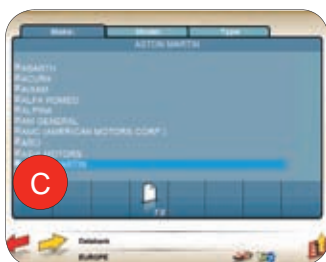
EN

MEASURING TECHNOLOGY

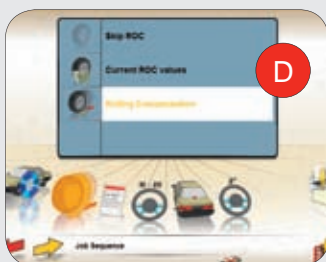
Measuring technology of characteristic angles by means of 2 high-resolution digital cameras. Visual targets supplied complete with 4-point clamps having capacity from 11" to 27". Conceived without any electronic component which do not require any calibration activity.



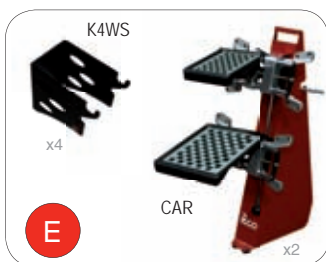
EN ALIGNMENT SOFTWARE: Professional alignment software complete with an easy-to-use and intuitive user interface to prevent operators from making errors during the different working phases. Possibility to customize display, key functions and languages.



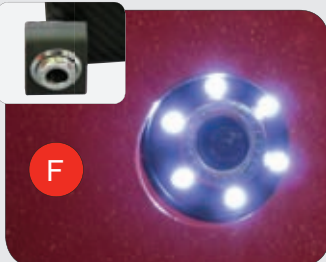
EN DATA BANK: The primary data bank is composed of more than 20.000 vehicles, adequately subdivided into different geographical areas for easy data searching. Available also a secondary data bank to be managed and customized directly from the user.



EN «RUN-OUT» COMPENSATION PROGRAM: Program to compensate «Run-Out» problems on tyre and rim and possible mistakes caused by an incorrect coupling between rim and self-centering clamp. The compensation value is calculated by pushing the vehicle for a distance corresponding to a wheel rotation of only 30°.



EN CLAMP-HOLDER DEVICES (OPTIONAL): 2 different clamp-holder accessories are available on demand: 4 support brackets for on-wall installation (K4WS) or 2 movable trolleys (CAR) for easy support of clamp assembly and comfortable shifting inside the working area of these delicate items.

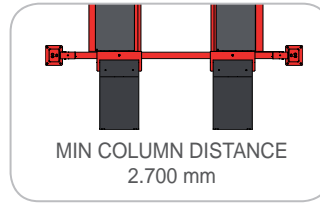


EN DRIVE-ON CAMERA (OPTIONAL): Remote cameras to be installed on the vertical column to visualize on the monitor the vehicle during its positioning on the lift runways and on the turntables.



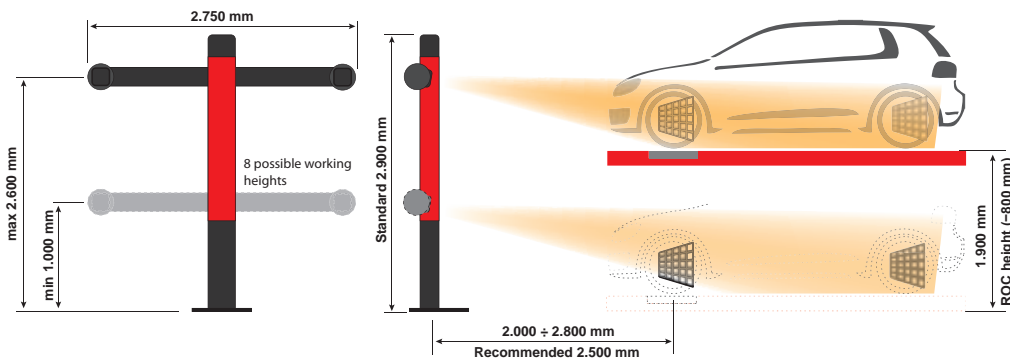
Wheel Aligner

4-POST LIFT COMPATIBILITY



TECHNICAL DATA

MEASURING TECHNOLOGY	Cameras
ANGLE MEASURING DEVICE	Targets
OPERATING SYSTEM REQUIREMENTS	Windows 10 Pro
ALIGNMENT PRECISION	0,01°
TOTAL TOE	± 20,00°
CAMBER	± 10,00°
CASTER	± 30,00°
KING PIN	± 30,00°
SET BACK	± 22,00°
THRUST ANGLE	± 10,00°
STEERING ANGLE	± 24,00°
POWER SUPPLY	115-230V/1ph/50-60Hz



OPTIONAL ACCESSORIES

- MNT 27 – LCD monitor 27".
- MNT 32 – LCD monitor 32".
- PC BOX – Box for Tower PCs. Optional accessory for TECO 820 supplied w/o PC.
- KIT MB – Motorized camera-holder bar kit to extend camera field of view till floor level. Available for selected countries only.
- DOC – Remote cameras to be installed inside the vertical column.
- CPRM2 – Pair of turntables for car steering measurement having max capacity of 1,0 T (2.205 lbs).
- LPT – Turntable spacers for push-mode ROC.
- USA DB – Specific US data bank (renewal required each year).
- STP – Printer.
- CU820 – Calibration unit.

ACCESSORIES

TRG820

BS820 BF820

LPT x2 CPRM2 x2 STP x4 K4WS x2 CAR

STANDARD

OPTIONAL
For other optional accessories, refer to separate catalogue

PC BOX

KIT MB

MNT 27/32

KFT820 x4

USA DB

DOC

CU820

OPTIONAL
For other optional accessories, refer to separate catalogue

